

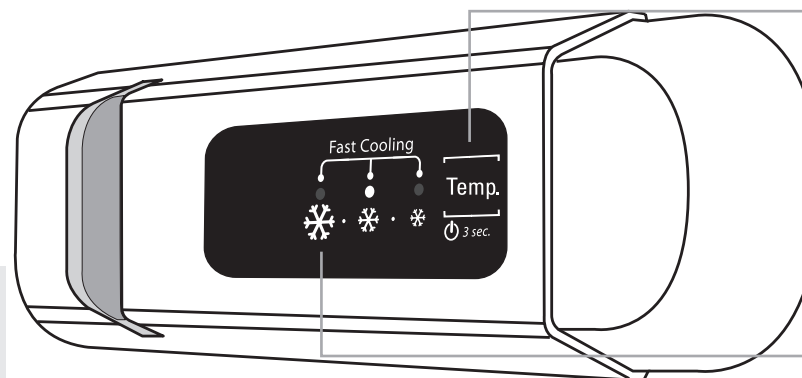
- A. Control panel with LED lights
- B. Shelves
- C. Level covering fruit and vegetable drawer
- D. Fruit and vegetable drawers
- E. Rating plate (placed on the side of the fruit and vegetable drawer)
- F. Freezer compartment
- G and H. Door shelves
- I. Bottle holder (if provided)
- L. Bottle shelf



Note: All of the drawers, door shelves and shelves can be removed.

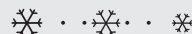
The ideal food storage temperatures are already factory-set.

Read the instructions carefully before using the appliance. Features, technical data and images may vary according to the model.



Fast Freeze/Cool Function (Fast Cooling)

To quickly cool the refrigerator compartment, or six hours before putting a large quantity of food to be frozen in the freezer compartment (if there is one), turn on the "Fast Cooling" function by repeatedly



pressing the button until the 3 icons flash green and then stay constant.

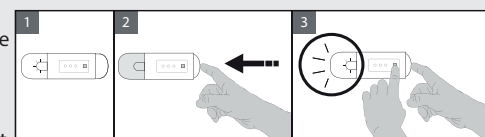
The function automatically turns off after 30 hours and the temperature returns to the previous setting when the function is turned on.

To turn the function off manually, press the button.

Note: do not put foods that are to be frozen in contact with others that are already frozen.

Fan

The fan is pre-set to ON. To turn the fan on/off carry out the following steps: Press the light button as shown in figure 2. The light will turn off. Without releasing the light button, also hold down the button as shown in figure 3. The light will flash just once if the fan is OFF, or it will flash 3 times if the fan is ON. If the ambient temperature exceeds 27°C, or if drops of water are present on the glass shelves, it is recommended that the fan is turned on to ensure optimal preservation of the food. Turning the fan off allows for optimal energy consumption.



On/Stand-by

Press the button for 3 seconds to turn the appliance off (the control panel and the light will remain turned off). Press it briefly to turn it back on.

Note: this procedure does not disconnect the appliance from the electricity supply.

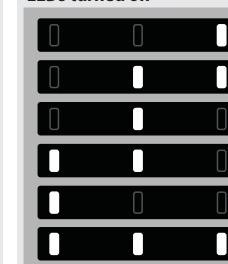
Refrigerator compartment temperature

The three lights indicate the temperature set in the refrigerator compartment.

It is possible to set a different temperature with the button.

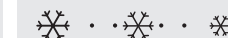
The possible controls are as follows:

LEDs turned on



Temperature set

- High (least cold)
- Medium-high
- Medium
- Medium-low
- Low (coldest)
- Fast cool



What to do if...	Possible reasons:	Solutions:
The control panel is off, the appliance is not working.	There may be a problem with the power supply to the appliance.	Check that: <ul style="list-style-type: none"> - there is no power outage - the plug is properly inserted in the socket and any bipolar power switch is in the correct position (this enables the power supply to the appliance) - the protective relays for the electrical system for the house are working - the power cable is not broken. Turn the appliance on by briefly pressing the button (see On/Stand-by function).
The inside light does not work.	It may be necessary to replace the light. Technical component malfunction.	Contact an authorized Service Centre.
The internal light is flashing.	Door alarm active. Activates when the door to the refrigerator compartment stays open for a long time.	To stop it, close the refrigerator door. When re-opening the door, check the light function.
The internal temperature of the compartments is not cold enough.	There are various possible causes (see the "Solutions" column).	Check that: <ul style="list-style-type: none"> - the doors are closed properly - the appliance is not installed near a heat source - the set temperature is adequate - the circulation of air through the ventilation grilles on the base of the appliance is not obstructed (see installation manual).
There is water on the bottom of the refrigerator compartment.	The defrosting water drain is blocked.	Clean the defrosting water drain (see section "Maintaining and cleaning the appliance" in the instructions for use).
Excessive amount of frost in the freezer compartment.	The door to the freezer compartment is not closed properly.	<ul style="list-style-type: none"> - Defrost the freezer compartment. - Make sure the refrigerator has been correctly installed. - Check that there is nothing preventing the door from closing properly.
One or more green symbols are flashing continuously and it is not possible to change the temperature set.	Malfunction alarm The alarm indicates the malfunction of a technical component.	Call the authorized Technical Assistance Service.
The temperature of the refrigerator compartment is too cold.	<ul style="list-style-type: none"> - The set temperature is too cold. - A large amount of fresh food may have been placed in the freezer compartment. 	<ul style="list-style-type: none"> - Try to set a less cold temperature. - If fresh food has been put in the freezer compartment, wait until the freezing has been completed.

Note: some noises, such as gurgles and hissing, caused by the refrigeration system, are normal.