

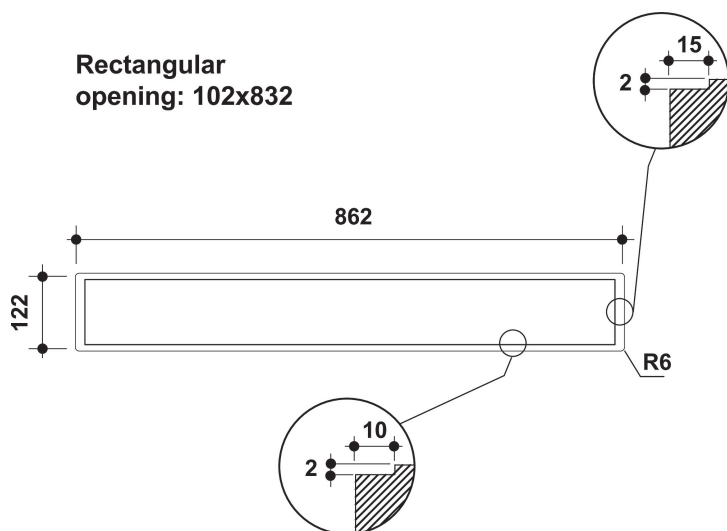
# WDO 93F B K

12NC: 859991532660

GTIN (EAN) code: 8003437209512

Whirlpool

SENSING THE DIFFERENCE



- Maximum noise level 68 dBA
- Noise Level (min. - max.): 54-68 dBA
- Air Flow (min. - max.): 304, 496, booster 603 m<sup>3</sup>/h
- Maximum extraction rate: 496 (m<sup>3</sup>/h)
- Energy class B
- Speeds: 3 + Booster
- 1 x 110 W motor
- Electronic Touch control
- 2 Washable aluminium filters
- Timer
- Grease Filtering Efficiency Class: C
- Fluid Dynamic Efficiency Class: B
- Filter Saturation Indicator
- Operating Mode: Air extraction, Recirculating air
- Black Finishing
- 1 Motor
- Motor Power: 110 W

## Whirlpool cooker hood - WDO 93F B K

This Whirlpool Cooker Hood features: black color. Dishwasher-safe, washable aluminium grease filters. An outstanding cooker extractor fan, ensuring a fresh, grease-free cooking environment. Between 60cm and 90cm wide appliance. New design ensuring extra silent performance.

### Electronic control

Effortless control. This Whirlpool Hood includes an intuitive electronic user interface, designed to provide you with the simplest, most satisfying user experience ever.

### Flexible Installation

Flexible installation options. This Whirlpool Hood can be operated in either Ducted or Recirculated mode (filter needed), so you can enjoy complete freedom when designing your kitchen.

### Grease Filter

Odour-free cooking. This Whirlpool Hood features an efficient grease filter, that protects your kitchen surfaces and ensures pleasant, odour-free cooking.

### 3 Speeds

Versatile performance. This Whirlpool Hood offers 3 speed options, giving you complete control over the extraction rate.

### WCollection aesthetic

A Masterpiece of Design. Whirlpool understands the importance of craftsmanship and carefully honed details. The timeless design of the W Collection complements any style of kitchen, while the matching appliances blend seamlessly with each other to create a sublimely eye-catching coordinated look. Even the gleaming finishes are engineered for easy cleaning, so fingerprints and smudges become a thing of the past. From the platinum chromed logo to the tinted glass and sophisticated edge-to-edge metal band, every detail has been designed to delight and enhance the overall Whirlpool experience.

### Total annual energy consumption

Ideal performance, outstanding savings. Whirlpool Hoods are designed to provide exceptional results, while reducing energy costs.

### Touch control user interface

Intuitive controls. The stylish touch-control user interface provides simple, immediate access to all of your hood's settings and functions.

### Booster

Odour-free cooking. This Whirlpool Hood features an extraction booster, that ensures ideal air filtration and odour and grease aspiration.

### Energy class B

Energy efficient. This is an Energy Class B appliance.

# WDO 93F B K

12NC: 859991532660

GTIN (EAN) code: 8003437209512

**Whirlpool**

SENSING THE DIFFERENCE

## MAIN FEATURES

|   |                               |
|---|-------------------------------|
| Product group                           | Hood                          |
| Colour body                             | Black                         |
| Material body                           | Stainless steel               |
| Colour chimney                          | N/A                           |
| Material chimney                        | N/A                           |
| Typology                                | Downdraft                     |
| Installation type                       | Table top                     |
| Type of control                         | Electronic                    |
| Type of control settings                | Touch-control                 |
| Decor panel options                     | Not possible                  |
| Motor location                          | Integrated motor in hood body |
| Operating Mode                          | Convertible                   |
| Electrical connection rating (W)        | 110                           |
| Current (A)                             | 0,5                           |
| Voltage (V)                             | 220-240                       |
| Frequency (Hz)                          | 50                            |
| Length of Electrical Supply Cord (cm)   | 200                           |
| Plug type                               | Schuko                        |
| Chimney height (mm)                     | 0                             |
| Height of product, without chimney (mm) | 0                             |
| Height of the product                   | 770                           |
| Width of the product                    | 860                           |
| Depth of the product                    | 400                           |
| Minimum niche height                    | 0                             |
| Minimum niche width                     | 0                             |
| Niche depth                             | 0                             |
| Net weight (kg)                         | 22                            |

## TECHNICAL FEATURES

|   |                    |
|---|--------------------|
| Type of manual control devices                          | Touch control      |
| Type of automatic control devices                       | -                  |
| Number of motors  | 1                  |
| Total power of the motors (W)                           | 110                |
| Number of speed settings: boost option availability     | 3                  |
| Boost presence  | Yes                |
| Maximum output air extraction (m <sup>3</sup> /h)       | 603                |
| Boost position air extraction (m <sup>3</sup> /h)       | 603                |
| Maximum output recirculating air (m <sup>3</sup> /h)    | 0                  |
| Boost position output recirculating (m <sup>3</sup> /h) | 0                  |
| Light Control Type                                      | -                  |
| Number of lights  | 0                  |
| Type of lamps used                                      | N/A                |
| Total power of the lamps (W)                            | 0                  |
| Diameter of air outlet (mm)                             | 0                  |
| No-return airflow flap                                  | No                 |
| Grease filter material                                  | Washable aluminium |
| Odour filter  | No                 |

## PERFORMANCES

|   |    |
|---|----|
| Sound power at min. speed (2010/30/EU)          | 54 |
| Sound power at max. speed (2010/30/EU)          | 68 |
| Noise level with boost position (dB(A) re 1 pW) | 0  |

