



**THANK YOU FOR BUYING A WHIRLPOOL PRODUCT**  
 In order to receive a more complete assistance, please register your product on [www.whirlpool.eu/register](http://www.whirlpool.eu/register)



**Before using the appliance carefully read the Safety Instruction.**

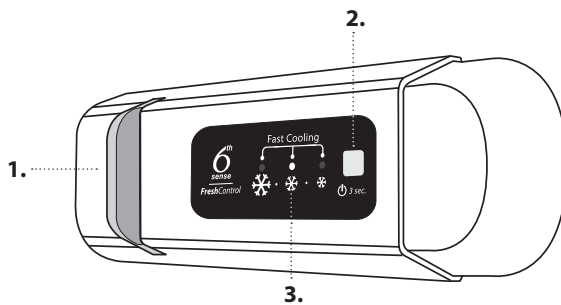
## PRODUCT DESCRIPTION

### FIRST TIME USE

Wait at least two hours, after the installation, before connecting the appliance to the power supply. Connect the appliance to the power supply it starts the operation automatically. The ideal storage temperatures for the food are preset in the factory.

After turning the appliance on, you must wait for 4-6 hours for the correct storage temperature to be reached for a normally filled appliance. Position the antibacterial anti-odour filter in the fan as demonstrated in the filter packaging (if available). If the audible signal sounds, it means that the temperature alarm has intervened: press the button to switch off the acoustic alarms.

### CONTROL PANEL



1. LED Light
2. On/Stand-by
3. Freezer and refrigerator compartment temperature

#### 6<sup>th</sup> SENSE FRESH CONTROL

The appliance is automatically able to quickly reach the optimal internal preservation temperature. The function enables to control also the humidity of the appliance. In order for it to function correctly, the fan must also be turned on. It is possible to turn the function on/off (see Fan description).

#### ON/STAND-BY

Press the button for 3 seconds to turn the appliance off. In Stand-by mode the light in the refrigerator compartment does not turn on. Press the button again briefly to reactivate the appliance.

Note: this does not disconnect the appliance from the power supply.

#### FREEZER AND REFRIGERATOR COMPARTMENT TEMPERATURE

The three LED indicators indicate the refrigerator compartment set temperature.

It is possible to set a different temperature of the appliance with the button.

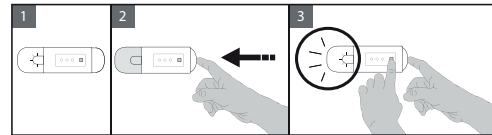
The following adjustments are possible:

LEDs lit	Set temperature
	High (less cold)
	Medium-high
	Medium
	Medium-low
	Low (colder)
	Fast cool



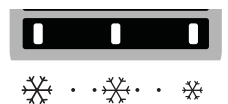
#### FAN\*

The Fan is pre-set to ON. You can turn the Fan on/off by pressing the light button (as shown in figure 2) and at the same time the button as shown in figure 3. The light will flash just once if the Fan is OFF, or it will flash 3 times if the Fan is ON. If the ambient temperature exceeds 27°C, or if drops of water are present on the glass shelves, it is essential that the fan is on to ensure the proper preservation of the food. Deactivation of the fan allows energy consumption to be optimised.



#### FAST COOL FUNCTION (FAST COOLING)

To quickly cool the refrigerator compartment, or 6 hours before putting a large quantity of food to be frozen in the freezer compartment, turn on the "Fast Cooling" function by repeatedly pressing the button until the 3 icons flash green and then stay constant.



The function automatically turns off after 30 hours and the temperature returns to the previous setting when the function is turned on.

To turn the function off manually, press the button.

Note: avoid a direct contact between the fresh food and the food that is already frozen.

To optimize the freezing speed, the lower drawer can be removed and the food can be placed directly on the bottom of the compartment.

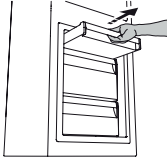
\* Available only on certain models

## STOP FROST SYSTEM\*

The STOP FROST SYSTEM facilitates the defrost procedure for the freezer compartment.  
The STOP FROST accessory is designed to collect some of the frost that forms in the freezer compartment and it is easy to remove and clean, therefore reducing the time needed to defrost the freezer compartment.

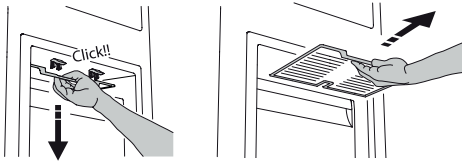
### PROCEDURE TO CLEAN THE STOP FROST ACCESSORY

1. Open the freezer compartment door and remove the upper drawer.

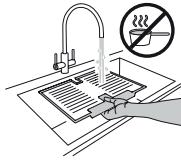


2. Unfasten the STOP FROST accessory and remove it, taking care not to drop it on the glass shelf below.

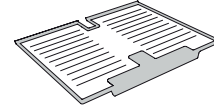
Note: if the accessory is jammed or difficult to remove, do not keep trying to remove it, but proceed with the complete defrost of the freezer compartment.



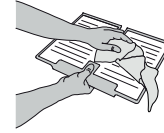
3. Close the door of the freezer compartment.
4. Remove the frost on the accessory by rinsing it under running (not hot) water.



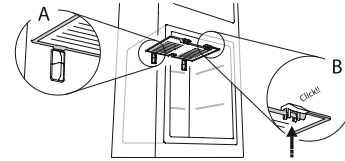
To remove the frost on the STOP FROST accessory follow the cleaning procedure demonstrated below.



5. Let the accessory drip dry and dry the plastic parts with a soft cloth.



6. Reinsert the accessory by placing the back part on the projections shown in figure, then refasten the handle of the accessory to the clasps above.

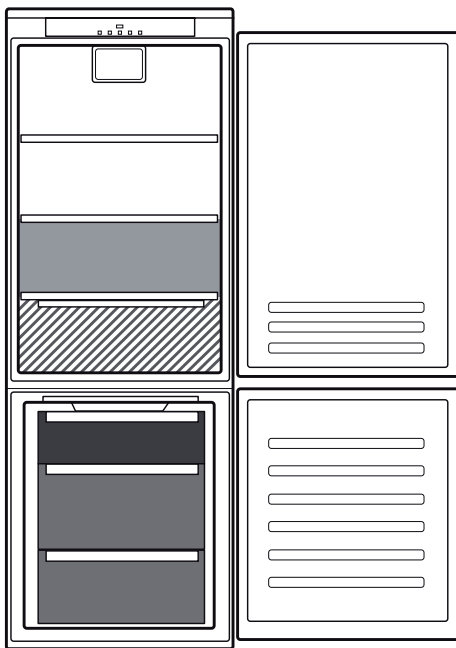


7. Reinsert the upper drawer and close the door of the freezer compartment.







It is possible to clean the STOP FROST accessory on its own without completely defrosting the freezer compartment.  
Cleaning the STOP FROST accessory regularly helps to reduce the need to completely defrost the freezer compartment.

Note: the product specifications, including volume and energy, are calculated without the STOP FROST accessory.

## HOW TO STORE FOOD AND BEVERAGE




### Legend

	<b>TEMPERATE ZONE</b> Suggested for storage of tropical fruit, cans, drink, eggs, sauces, pickles, butter, jam
	<b>COOL ZONE</b> Suggested for storage of cheese, milk, daily food, delicatessen, yoghurt
	<b>COOLEST AREA</b> Suggested for storage of cold cuts, desserts, meat and fish
	<b>FRUIT &amp; VEGETABLE DRAWER</b>
	<b>FREEZER DRAWERS</b>
	<b>FREEZING ZONE DRAWER</b> (Max cool zone) Suggested to freeze fresh/cooked food

\* Available only on certain models

# TROUBLESHOOTING

What to do if...	Possible reasons	Solutions
The control panel is switched off, the appliance does not work.	There may be an appliance power supply problem.	Check that: <ul style="list-style-type: none"> <li>• there is not a power outage;</li> <li>• the plug is properly inserted in the socket and any bipolar power switch is in the correct position (this enables the power supply to the appliance);</li> <li>• the household electrical system protection devices are efficient;</li> <li>• the power cable is not damaged.</li> </ul>
	The appliance could be in On/stand by mode.	Turn the appliance on by briefly pressing the  button (see On/Stand-by function).
The inside light does not work.	The light may need to be replaced. Malfunction of a technical component.	Disconnect the appliance from the power supply and contact the Technical Assistance Service if you need a replacement.
The inside light flashes.	Door alarm active. It is activated when the refrigerator compartment door remains open for a prolonged period of time.	To stop the alarm, close the refrigerator door. On reopening the door, check the light works.
The temperature inside the compartments is not low enough.	There could be various causes (see "Solutions").	Check that: <ul style="list-style-type: none"> <li>• the doors close properly;</li> <li>• the appliance is not installed near a heat source;</li> <li>• the set temperature is adequate;</li> <li>• the circulation of air through the vents at the bottom of the appliance is not obstructed (see installation section).</li> </ul>
There is water on the bottom of the refrigerator compartment.	The defrost water drain is blocked.	Clean the defrosting water drain (see section "Cleaning and Maintenance").
Excessive amount of frost in the freezer compartment.	The door to the freezer compartment is not closed properly.	Check that there is nothing preventing the door from closing properly. <ul style="list-style-type: none"> <li>• Defrost the freezer compartment.</li> <li>• Make sure the appliance has been correctly installed.</li> </ul>
The front edge of the appliance that the door gaskets seal against is hot.	This is not a defect. It prevents condensation from forming.	No solution is necessary.
One or more green symbols are flashing continuously and it is not possible to change the temperature set.	Malfunction alarm. The alarm indicates a fault in a technical component.	Contact Technical Assistance Service.
The temperature of the refrigerator compartment is too cold.	<ul style="list-style-type: none"> <li>• The set temperature is too cold.</li> <li>• A large amount of fresh food may have been placed in the freezer compartment.</li> </ul>	<ul style="list-style-type: none"> <li>• Try to set a less cold temperature.</li> <li>• If fresh food has been placed in the freezer compartment, wait until it has fully frozen.</li> <li>• Turn off the fan (if present) following the procedure described in the paragraph "FAN".</li> </ul>



You can download the Safety Instructions, User Manual, Product Fiche and Energy data by:

- Visiting our website [docs.whirlpool.eu](https://docs.whirlpool.eu)
- Using QR Code
- Alternatively, **contact our After-sales Service** (See phone number in the warranty booklet). When contacting our After-sales Service, please state the codes provided on your product's identification plate.



Whirlpool



40001189280