

This function will suggest to you the correct amount of detergent for your wash load. By using the Dosing Aid you avoid detergent overdosing and

- save detergent
- protect the environment
- protect sensitive skin

Before the first use...

Make sure that the Dosing Aid function can work optimally.

1. Compare the dosing recommendation of the detergents you use with the dosing values preset in the washing machine. Adjust them if there is a mismatch.
2. Check and eventually adjust the water hardness preset in the washing machine.

I. Detergent dosing values

The concentration of detergents available on the market differs considerably. This is why you have to adjust your washing machine settings according to your detergents.

Your washing machine comes with 3 preset dosing values for 3 different types of detergents (generic – delicates – dark colours). Each detergent type is associated to a group of programmes (see table on the right). Each of the 3 preset values should be adjusted as to match the dosing recommendation reported on the package of the detergent/s that you intend to use for each specific group.

 Dark colours	 Delicates	 Generic
Dark	Wool/Handwash and Delicates	All other programmes


Check and adjust one of the preset dosing values (Detergent calibration)

Suppose you want to check and adjust the preset dosing value for all the programmes belonging to the “Generic detergent group”.

Important: during this phase do not consider the local water hardness and the habitual soil level of your laundry. Simply follow the instruction below.

A - Check

First Check on the package of your generic detergent which dosing amount is recommended for medium water hardness (or medium/soft) and medium soil level (or medium/light). Please use this value when you reach step 3 of the procedure described in the following section (see **B - Adjust**).



		water hardness		
		soft	medium	hard
soil level	light			
	medium		ml	
	heavy			

B - Adjust (Detergent Calibration)

Select a programme belonging to the programme group for which you want to check and possibly adjust the preset dosing value (for example the "Cotton" programme for the "Generic" group).

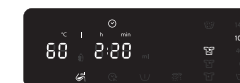
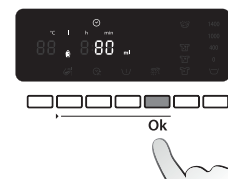
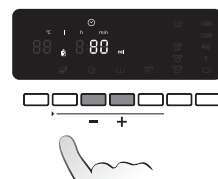
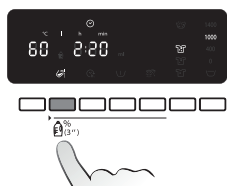
Press and hold the "Dosing Aid" button for a few seconds.

The bottle symbol on the display lights up, and the preset detergent dosing value appears on the display.

Compare the preset value indicated on the display with the dosing amount previously identified (i.e., that recommended on your detergent package for medium water hardness and medium soil level). If they differ, adapt the displayed value now by pressing "+" or "-"

Press the "Ok" button to confirm and save the new detergent value for the group.

The value on the display disappears, and the display goes back to the initial state.



Do this for all 3 programme groups.

It is sufficient to save a dosing value for ONE programme per group - it will be automatically saved for the other programmes of this group. For example, if you save a dosing value for "Cotton" it will be automatically saved for all programmes belonging to the "Generic" group.

If you want to change the saved dosing values (because you changed the type of detergent you use, for example) proceed as described above; the previously saved dosing value will be replaced by the new one for the programme group you selected.

How to reset the dosing values you saved and go back to the preset values

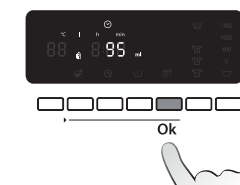
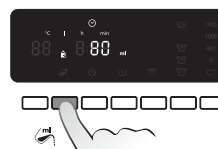
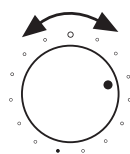
For a specific programme group:

Select any programme belonging to the group you want to reset the dosing value for.

Press and hold the "Dosing Aid" button for a few seconds - the bottle symbol and the currently saved dosing value are displayed.

Press the "Reset/Drain" button briefly - "rES" appears on the display for a short period.

The preset dosing value appears on the display. Press the "Ok" button to confirm.



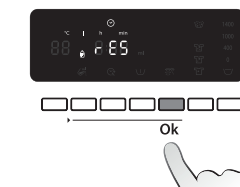
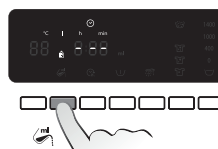
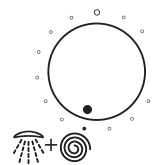
For all programmes:

Select programme "Rinse & Spin".

Press and hold the "Dosing Aid" button for a few seconds - the bottle symbol and three horizontal bars appear on the display.

Press the "Reset/Drain" button briefly - "rES" appears on the display.

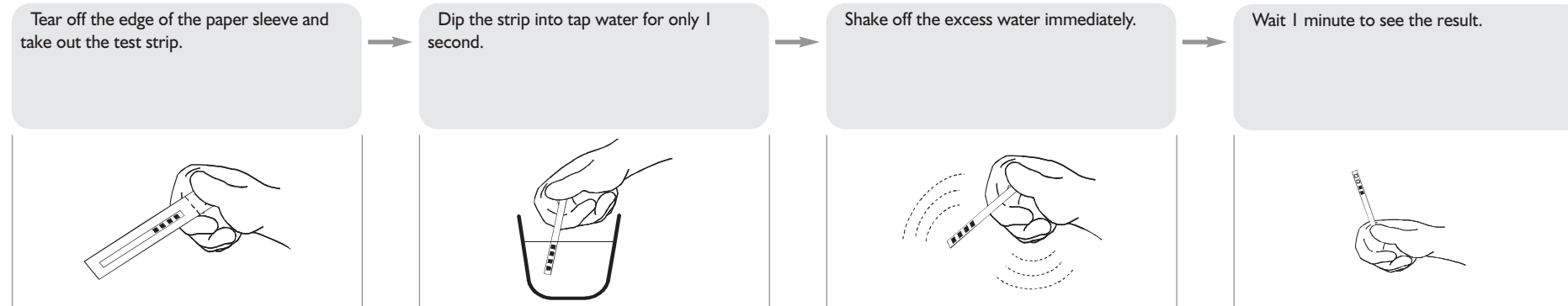
Press the "Ok" button to confirm and reset all saved values.



2. Water hardness

A - Check your local water hardness

Washing with “hard water” requires more detergent than washing with “soft” water, this is why you have to check if the preset water hardness matches your regional water hardness. To find out your local water hardness, ask your local water supply authorities, or use the test strip attached to the Calgon Leaflet provided with your washing machine (if available):

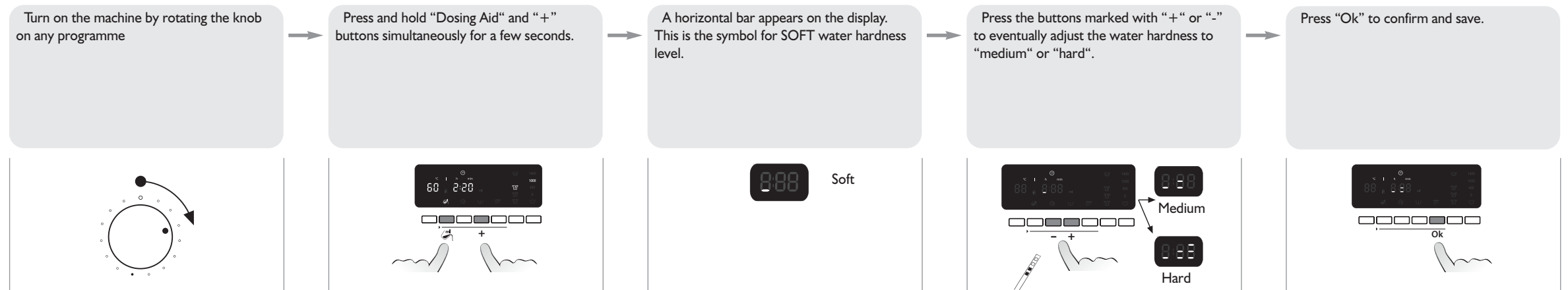


The test strip contains 4 green squares which will turn to red depending on the hardness of your water:



B - Adjust your water hardness settings

The water hardness of your washing machine by default is set to SOFT. If your local water hardness is medium or hard, you must adapt the water hardness of the washing machine as described below.



Dosing Aid - DAILY USE



Load the washing machine with laundry.

Select the desired programme. Add any options, and set a start delay if desired.

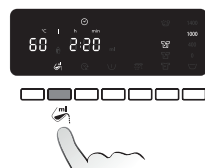
Select "Dosing Aid" and start the washing machine.

After approximately ten seconds the washing machine suggests the recommended detergent amount.

Add the recommended detergent amount to the dispenser.

Start the wash process.

Press the "Dosing Aid" button. The corresponding symbol appears on the display.



Press "Start (Pause)". The door locks. The drum gently moves for about 10 seconds while the wash load is detected. On the display an animation is shown.

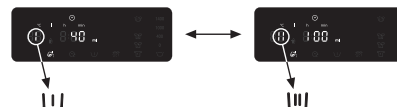
Note that for Wool and Delicates programmes the drum will move more gently.



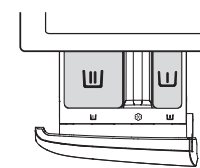
The recommended detergent amount in ml appears on the display.





If you have selected the option "Prewash", the display will alternately show the detergent amount for the prewash chamber (marked with "I") and for the main wash chamber (marked with "II") of the detergent dispenser.

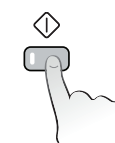


Pour the recommended detergent amount in the appropriate chamber of the dispenser now.



 Prewash
 Mainwash

Press the "Start (Pause)" button again.



The washing machine recalculates the programme duration according to the detected wash load while the display shows an animation.

The new wash time is displayed **and the wash programme starts automatically.**



IMPORTANT NOTES

- You have to set any options and the start delay before you start the wash programme. That is, before you press the "Start (Pause)" button for the first time.
- If "Dosing Aid" is selected and you want to add more laundry after you have pressed the "Start (Pause)" button for the first time, proceed as follows:
 - press and hold the "Reset/Drain" button for a few seconds; the display shows the default setting of the programme.
 - Wait until the door unlocks (this can take more than a minute).
 - Now add your laundry and go on following the procedure as described above ("Daily Use") to get the recommended detergent quantity displayed.
- When "Dosing Aid" is selected, you have to add the detergent into the dispenser. This also applies if you have set a start delay. You cannot add the detergent directly to the drum using a dosing cup because the door will be locked while the dosing amount is displayed.

- If "Dosing Aid" is selected and you want to reset everything after you have pressed the "Start (Pause)" button for the first time, proceed as follows:
 - press and hold the "Reset/Drain" button for a few seconds; the display goes back to the initial state. It can take more than a minute until the door unlocks.
- The duration of programmes with small maximum loads (like "Delicates", "Wool/Handwash" etc. - see in separate Programme Chart) is NOT updated according to the amount of laundry added.
- The real programme duration can differ from the time indicated on the display even after the wash load has been identified. This is because it can be influenced by factors like reduced inlet water temperature, which leads to a longer heating time. Note also that whenever the programme duration is recalculated, the display shows an animation.
- If you load the drum with laundry which is already wet, do not use the full amount of detergent suggested by the "Dosing Aid" function - only use 2/3 of the recommended amount.
- The minimum wash load the "Dosing Aid" will identify is 2 kg, even for smaller loads below 2 kg.