

5KEK1322



KitchenAid

TABLE OF CONTENTS

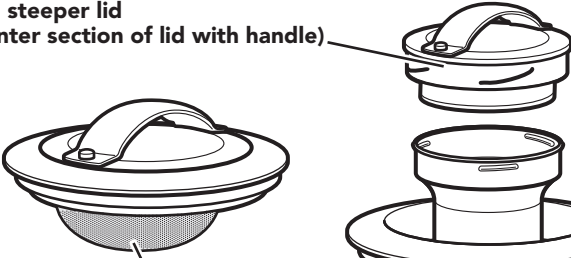
PARTS AND FEATURES	6
Parts and accessories.....	6
GLASS TEA KETTLE SAFETY	7
Important safeguards	7
Electrical requirements.....	10
Electrical equipment waste disposal	10
USING THE GLASS TEA KETTLE	11
Preparing the Glass Tea Kettle for use	11
Steeping Chart	12
Optional method – brewing with tea bags	12
Brewing tea.....	13
CARE AND CLEANING	17
Descaling the Glass Tea Kettle	17
Cleaning the Glass Tea Kettle and accessories	17
WARRANTY AND SERVICE	18

PARTS AND FEATURES

PARTS AND ACCESSORIES

Tea steeper lid

(center section of lid with handle)

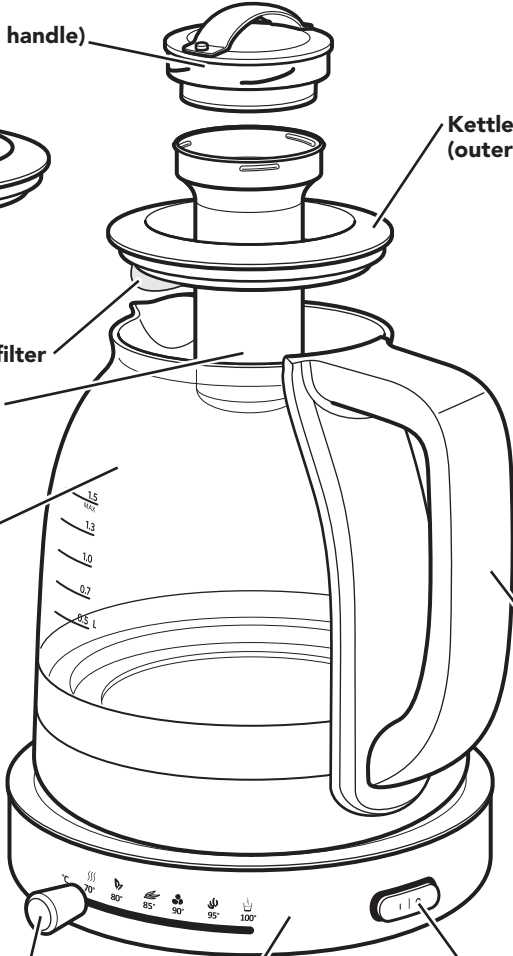


Kettle lid
(outer section)

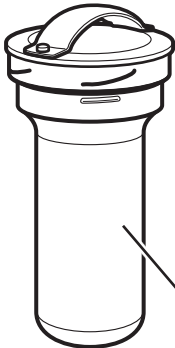
Stainless steel lime scale filter

Removable stainless steel
tea steeper

Glass tea kettle



Kettle
handle

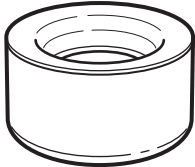


Tea steeper assembly:
Removable stainless steel tea steeper*
and Tea steeper lid*

Temperature selector

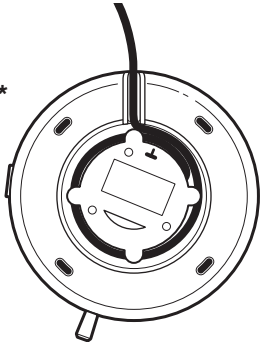
Kettle base

I/O (on/off)
button



Tea steeper holder

*Part also shown above



Cord wrap (on underside of base)

Your safety and the safety of others are very important.

We have provided many important safety messages in this manual and on your appliance. Always read and obey all safety messages.



This is the safety alert symbol.

This symbol alerts you to potential hazards that can kill or hurt you and others.

All safety messages will follow the safety alert symbol and either the word “DANGER” or “WARNING.” These words mean:

! DANGER

You can be killed or seriously injured if you don't immediately follow instructions.

! WARNING

You can be killed or seriously injured if you don't follow instructions.

All safety messages will tell you what the potential hazard is, tell you how to reduce the chance of injury, and tell you what can happen if the instructions are not followed.

IMPORTANT SAFEGUARDS

When using electrical appliances, basic safety precautions should always be followed, including the following:

1. Read all instructions. Misuse of appliance may result in personal injury.
2. The heating element surface is subject to residual heat after use. Do not touch hot surfaces. Use handles.
3. Do not submerge cord, plug, or Glass Tea Kettle in water or other liquids. The appliance must not be immersed.
4. Do not operate the Glass Tea Kettle unless the element is fully immersed.
5. Do not overfill Water Kettle. If the Water Kettle is overfilled, boiling water may be ejected.

GLASS TEA KETTLE SAFETY

6. This appliance can be used by children aged from 8 years and above and persons with reduced physical, sensory or mental capabilities or lack of experience and knowledge if they have been given supervision or instruction concerning use of the appliance in a safe way and understand the hazards involved. Children shall not play with the appliance. Cleaning and user maintenance shall not be made by children unless they are older than 8 and supervised.
7. Keep the appliance and its cord out of the reach of children aged less than 8 years.
8. Children should be supervised to ensure that they do not play with the appliance.
9. Unplug Glass Tea Kettle from outlet and allow to cool before cleaning, or removing parts.
10. Do not operate any appliance with a damaged cord or plug, or after the appliance malfunctions, or is dropped or damaged in any manner. Return appliance to the nearest Authorised Service Facility for examination, repair, or electrical or mechanical adjustment.
11. Use of replacement parts not recommended by manufacturer may result in fire, shock, or injury to persons.
12. The kettle is only to be used with the stand provided.
13. Do not let cord hang over counter or table edges, or allow to come into contact with heated surfaces.
14. Do not use near, or on, a hot gas or electric burner stove.
15. The Glass Tea Kettle should only be used to heat water.
16. Never pour water on hot or burning fat.
17. Never attempt to carry the hot appliance. Spilled hot fat may cause severe injuries or burns.

GLASS TEA KETTLE SAFETY

18. Do not use Glass Tea Kettle without lid properly closed.
19. Do not use Glass Tea Kettle with loose or weakened handle.
20. Do not clean Glass Tea Kettle with cleaners, steel wool, or other abrasive materials. To prevent damage to the appliance do not use alkaline cleaning agents when cleaning; use a soft cloth and a mild detergent.
21. Do not operate the kettle on an inclined plane.
22. Do not move while the kettle is switched on.
23. This appliance is intended to be used in household and similar applications such as:
 - staff kitchen areas in shops, offices or other working environments.
 - farm houses.
 - by clients in hotels, motels and other residential type environments.
 - bed and breakfast type environments.


SAVE THESE INSTRUCTIONS

**THIS PRODUCT IS DESIGNED FOR HOUSEHOLD USE ONLY.
NOT DESIGNED FOR COMMERCIAL USE.**

GLASS TEA KETTLE SAFETY

ELECTRICAL REQUIREMENTS

⚠ WARNING



Electrical Shock Hazard

Plug into a grounded outlet.

Do not remove ground prong.

Do not use an adapter.

Do not use an extension cord.

Failure to follow these instructions can result in death, fire, or electrical shock.

Voltage: 220 - 240 Volts A.C.

Frequency: 50-60 Hertz

Wattage: 2400 Watts for model 5KEK1322E and 5KEK1322S (kettles with European and Swiss plugs)
3000 Watts for model 5KEK1322B (kettle with British plug)

NOTE: If the power cord is damaged, it must be replaced by the manufacturer or its service agent in order to avoid a hazard.

Do not use an extension cord. If the power supply cord is too short, have a qualified electrician or serviceman install an outlet near the appliance.

ELECTRICAL EQUIPMENT WASTE DISPOSAL

Disposal of packing material


The packing material is 100% recyclable and is marked with the recycle symbol . The various parts of the packing must therefore be disposed of responsibly and in full compliance with local authority regulations governing waste disposal.

Scrapping the product

- This appliance is marked in compliance with European Directive 2012/19/EU, Waste Electrical and Electronic Equipment (WEEE).

- By ensuring this product is disposed of correctly, you will help prevent potential negative consequences for the environment and human health, which could otherwise be caused by inappropriate waste handling of this product.



- The symbol  on the product or on the accompanying documentation indicates that it should not be treated as domestic waste but must be taken to an appropriate collection Centre for the recycling of electrical and electronic equipment.

For more detailed information about treatment, recovery and recycling of this product, please contact your local city office, your household waste disposal service or the shop where you purchased the product.

USING THE GLASS TEA KETTLE

PREPARING THE GLASS TEA KETTLE FOR USE

⚠ WARNING



Electrical Shock Hazard

Plug into a grounded outlet.

Do not remove ground prong.

Do not use an adapter.

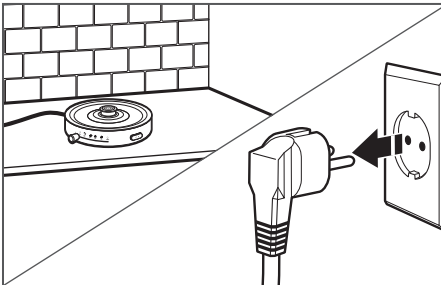
Do not use an extension cord.

Failure to follow these instructions can result in death, fire, or electrical shock.

Before first use

Before using your Glass Tea Kettle for the first time, wash the kettle and steeper assembly, including the lid, in hot, soapy water, then rinse with clean water and dry. Fill the Glass Tea Kettle with water to the MAX fill line, place the steeper assembly in the Glass Tea Kettle, and run one cycle at the maximum temperature. To avoid damage, do not fully immerse the Glass Tea Kettle in water, and do not use abrasive cleaners or scouring pads.

NOTE: The entire Glass Tea Kettle is hand-wash only. To avoid damage, do not wash any part of the Glass Tea Kettle, steeper, lids, steeper holder or the base with power cord in a dishwasher.








1

Place the base with power cord on a flat, sturdy surface and plug it into a grounded outlet, a chime will sound indicating that the power is on. If desired, wrap excess cord around the cord holder on the bottom of the base.

USING THE GLASS TEA KETTLE

STEEPING CHART

NOTE: Making the perfect cup of tea is easy with the KitchenAid Glass Tea Kettle. Water temperature and steep time are two key elements for optimal tea flavour. For best results, follow the recommendation on your tea's packaging for suggested water temperature and steep times. If it does not have these suggestions, see the chart below. Keep in mind, steep time determines flavour, so use a timer to find your perfect strength.

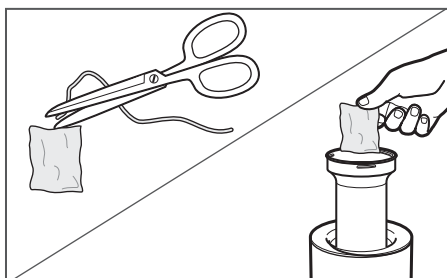
TEA TYPE	GREEN	WHITE	OOLONG	BLACK	HERBAL
					
SUGGESTED TEMPERATURE SETTING (C°)	80°	85°	90°	95°	100°
SUGGESTED STEEP TIME (MINUTES)	1-3	3-5	3-5	4-5	5-7

Warm Mode: Warm is designed to keep your tea warm at the optimal drinking temperature 70°C.

NOTE: Some teas call for different temperatures. Check your tea package for suggested steeping times and temperatures.

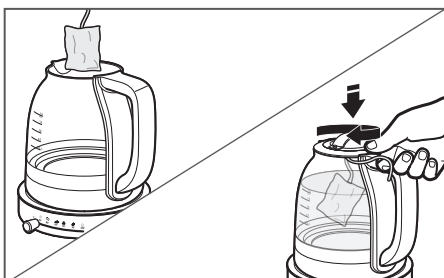
OPTIONAL METHOD – BREWING WITH TEA BAGS

The Glass Tea Kettle may be used for tea bags as well as loose leaf tea. Use the following methods if you prefer to use tea bags.



1

Using the Glass Tea Kettle tea steeper: After the water reaches the correct temperature for brewing (see the "Steeping chart"), cut any strings or tags off of the tea bag, and place the tea bag directly into the tea steeper. Brew your tea as normal.

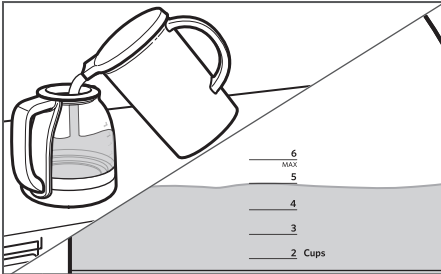


2

Placing tea bags directly into the Glass Tea Kettle: After the water reaches the correct temperature for brewing (see the "Steeping chart"), lift the tea steeper lid off of the Glass Kettle, and place the tea bag string over the inner edge of the kettle lid. Then, insert and twist the tea steeper lid to catch the string and suspend the tea bag in the water. Brew your tea as normal.

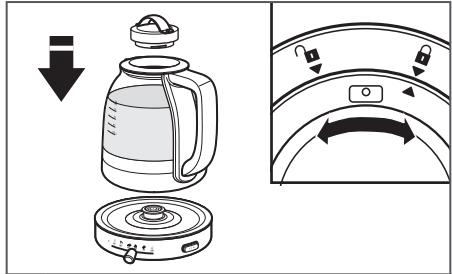
USING THE GLASS TEA KETTLE

BREWING TEA



1

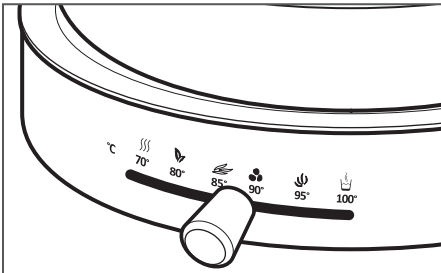
Fill the Glass Tea Kettle with filtered water up to the desired level for the amount of tea you want to brew. Do not fill past the Max line.



2

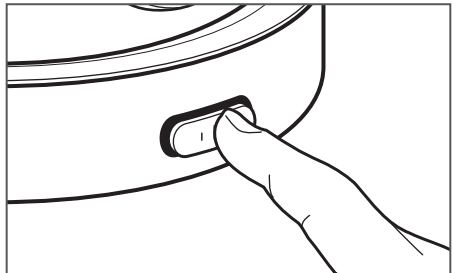
Put the lid back on the Glass Tea Kettle, without the steeper. The two lids are properly locked into each other when the indicator on the tea steeper lid is lined up with the indicator next to the locked symbol on the kettle lid. After locking the lids together, place the Glass Tea Kettle onto the power base.

IMPORTANT: We recommend adding tea and the steeper only after the water is heated.



3

Select the appropriate temperature for the kind of tea you are brewing by sliding the temperature selector to the correct setting. See the "Steeping chart" for more detailed information.



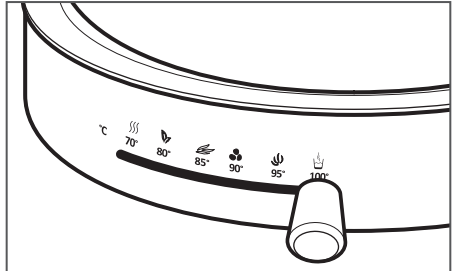
4

Press the I/O (on/off) button on the base to start heating the water. The light around the button will flash while the water is heating in the Glass Tea Kettle.

USING THE GLASS TEA KETTLE



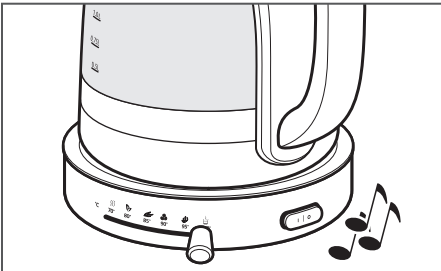
5 While the water is heating, place the tea steeper in the tea steeper holder to keep it steady while filling it with tea leaves (or tea bags). Follow the instructions on the tea packaging for the amount of tea to use.



OPTIONAL: To boil water instead of steeping tea, slide the temperature selector to HERBAL (100°C).

NOTE: For tea that does not include brewing directions, start with 15 g per 300 ml cup. Add more tea if the flavour is too weak, and less tea if the flavour is too strong. Experiment for the best flavour.

TIP: For best results, we recommend pre-wetting the tea leaves in the steeper with a little warm water before the steeper is added to the kettle. (This can be done while the steeper is in the steeper holder). This will allow the leaves to settle into the steeper during the steeping process.

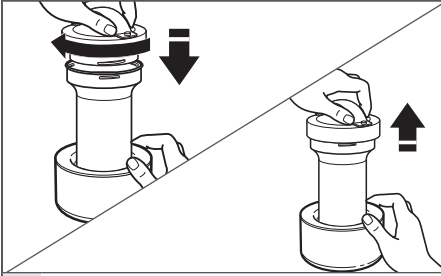


6 Once the water reaches the correct temperature for brewing your selected tea, a chime will sound and the light around the I/O (on/off) button will stop flashing, but remain lit, indicating that the water is ready for steeping the tea.



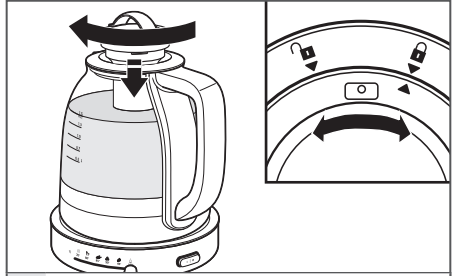
7 Remove the tea steeper lid from the kettle after the desired lid temperature is reached.

USING THE GLASS TEA KETTLE



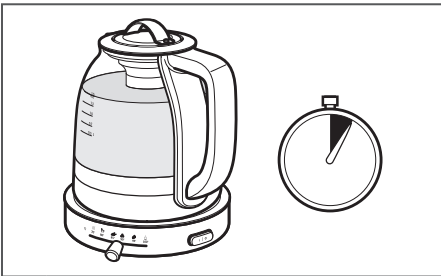
8

Hold the tea steeper lid in one hand, and grip the tea steeper holder in the other hand. With slight downward pressure, rotate the tea steeper lid into place on the tea steeper. Then, using the handle, lift the steeper assembly up, out of the steeper holder.



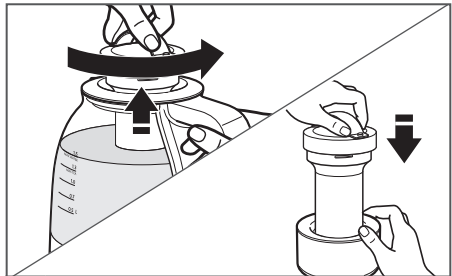
9

Place the tea steeper lid assembly inside the kettle lid. Twist the handle so that the tea steeper lid locks into place in the kettle lid. When locked into place, the indicator on the tea steeper lid will line up with the indicator next to the locked symbol on the kettle lid.



10

Use a timer to brew your tea for the appropriate time. See the "Steeping chart" for more detailed information.

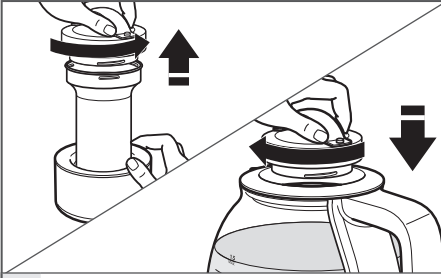


11

After steeping for the desired amount of time, twist the lid to release and lift the steeper assembly from the Glass Tea Kettle. Using the handle on the tea steeper lid, place the tea steeper assembly back in the tea steeper holder.

NOTE: Use the handle to remove. The steeper cylinder will be hot.

USING THE GLASS TEA KETTLE

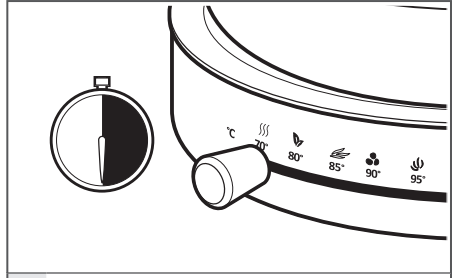


12

Hold the tea steeper lid in one hand, and grip the tea steeper holder in the other hand. With slight downward pressure, rotate the tea steeper lid off of the tea steeper. Then, place the tea steeper lid back inside the kettle lid, twisting to lock into place.

NOTE: Use the handle to remove. The steeper cylinder will be hot.

TIP: If the tea steeper lid is stuck on the tea steeper, this issue may be caused by twisting the tea steeper lid too tightly onto the tea steeper. Use a slight pressure to rotate the tea steeper lid when placing on the tea steeper. Do not over-rotate.



13

The kettle automatically goes into Warm mode after reaching temperature and holds for 30 minutes at Warm (70°C). The light around the I/O (on/off) button will remain lit while the Glass Tea Kettle is in Warm mode. If the kettle is removed, to keep the kettle warm after replacing it on the base, slide the temperature selector over to WARM and press the I/O (on/off) button again.

CARE AND CLEANING

DESCALING THE GLASS TEA KETTLE

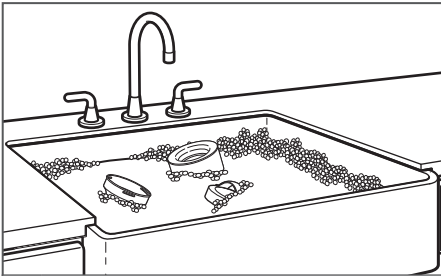
Calcium deposits (scale) from water will build up in the Glass Tea Kettle over time and impair brewing efficiency and tea quality. If you notice scale buildup inside your kettle or that it takes longer than usual to brew, then it is time to descale. To get the best performance from your Glass Tea Kettle, clean frequently. The cleaning interval will depend on the hardness of the water you put into the Glass Tea Kettle. Descaling should be done as soon as possible to preserve the performance and life of your Glass Tea Kettle.

To descale the Glass Tea Kettle:

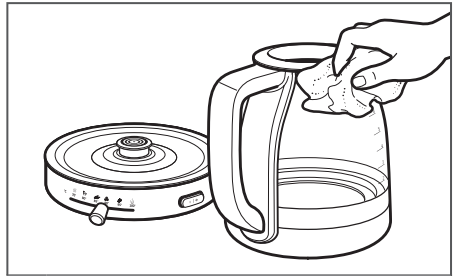
1. Fill the Glass Tea Kettle with white vinegar to the MIN (0.5 L) mark.
2. Add water to the 1.0 L mark.
3. Boil and allow to stand overnight.
4. Empty the solution from the Glass Tea Kettle.
5. Fill the Glass Tea Kettle with water, bring to a boil and drain out the water. Repeat this step twice. The Glass Tea Kettle is now ready to use.

CLEANING THE GLASS TEA KETTLE AND ACCESSORIES

IMPORTANT: To avoid damage, never immerse the Glass Tea Kettle or the base in water or place in the dishwasher.



- 1 After using the Glass Tea Kettle, remove the lids and steeper. Wash the lid parts, steeper, and steeper holder by hand with a soft cloth, in warm sudsy water.



- 2 Clean the Glass Tea Kettle and base by hand only. Wash with a soft, damp cloth. Dry thoroughly with a soft, dry cloth. Do not wash in the dishwasher. Do not immerse in water.

NOTE: After washing, store your Glass Tea Kettle out of the reach of small children.

WARRANTY AND SERVICE

KITCHENAID GLASS TEA KETTLE WARRANTY

Length of Warranty:	KitchenAid Will Pay For:	KitchenAid Will Not Pay For:
Europe, Middle East and Africa: 5KEK1322 Two years full warranty from date of purchase.	The replacement parts and repair labour costs to correct defects in materials or workmanship. Service must be provided by an Authorised KitchenAid Service Centre.	A. Repairs when Glass Tea Kettle is used for operations other than normal household food preparation. B. Damage resulting from accident, alterations, misuse, abuse, or installation/operation not in accordance with local electrical codes.

KITCHENAID DOES NOT ASSUME ANY RESPONSIBILITY FOR INDIRECT DAMAGES.

CUSTOMER SERVICE

In U.K. and Ireland:

For any questions, or to find the nearest KitchenAid Authorised Service Centre, please find our contact details below.

NOTE: All service should be handled locally by an Authorised KitchenAid Service Centre.

Contact number for U.K. and Northern Ireland:

Tollfree number 0800 988 1266 (calls from mobile phones are charged standard network rate) or call 0194 260 5504

Contact number for Ireland:

Tollfree number +44 (0) 20 8616 5148

E-mail contact for U.K. and Ireland:

Go to www.kitchenaid.co.uk, and click on the link "Contact Us" at the bottom of the page.

Address for U.K. and Ireland:

KitchenAid Europa, Inc.
PO BOX 19
B-2018 ANTWERP 11
BELGIUM

General hotline number:  00800 3810 4026

In other countries:

For all product related questions and after sales matters, please contact your dealer to obtain the name of the nearest Authorised KitchenAid Service/Customer Centre.

For more information, visit our website at:

www.KitchenAid.co.uk
www.KitchenAid.eu

© 2016. All rights reserved.
Specifications subject to change without notice.