

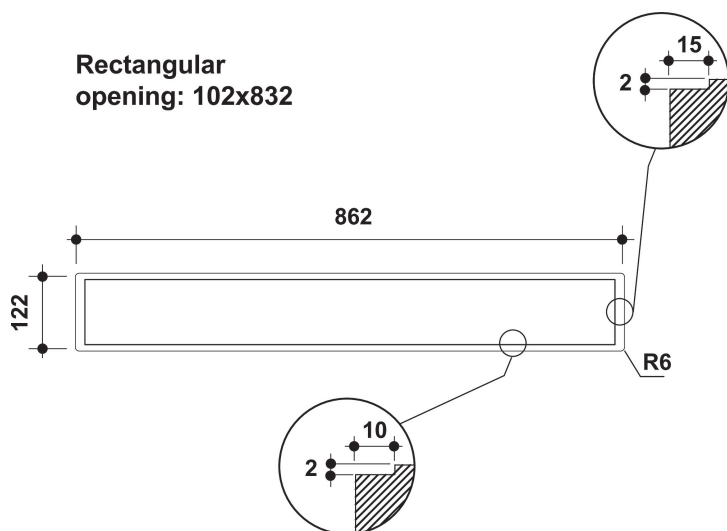
# WDO 93F B K

12NC: 859991532660

GTIN (EAN) code: 8003437209512

Whirlpool

SENSING THE DIFFERENCE



- Maximum noise level 68 dBA
- Air Flow (min. - max.): 304, 496, booster 603 m<sup>3</sup>/h
- Maximum extraction rate: 496 (m<sup>3</sup>/h)
- Energy class B
- 3 speed settings + booster
- 1 x 110 W motor
- Electronic Touch control
- 2 Washable aluminium filters
- Timer
- Grease Filtering Efficiency Class: C
- Fluid Dynamic Efficiency Class: B
- Filter Saturation Indicator
- Operating Mode: Air extraction, Recirculating air
- Black Finishing
- 1 Motor
- Motor Power: 110 W
- 90 cm Downdraft hood

## Whirlpool cooker hood - WDO 93F B K

This Whirlpool Cooker Hood features: black color. Dishwasher-safe, washable aluminium grease filters. An outstanding cooker extractor fan, ensuring a fresh, grease-free cooking environment. Between 60cm and 90cm wide appliance. New design ensuring extra silent performance.



### Electronic control

Effortless control. This Whirlpool Hood includes an intuitive electronic user interface, designed to provide you with the simplest, most satisfying user experience ever.



### Flexible Installation

Flexible installation options. This Whirlpool Hood can be operated in either Ducted or Recirculated mode (filter needed), so you can enjoy complete freedom when designing your kitchen.



### Grease Filter

Odour-free cooking. This Whirlpool Hood features an efficient grease filter, that protects your kitchen surfaces and ensures pleasant, odour-free cooking.



### 3 Speeds

Versatile performance. This Whirlpool Hood offers 3 speed options, giving you complete control over the extraction rate.



### WCollection aesthetic

A Masterpiece of Design. Whirlpool understands the importance of craftsmanship and carefully honed details. The timeless design of the W Collection complements any style of kitchen, while the matching appliances blend seamlessly with each other to create a sublimely eye-catching coordinated look. Even the gleaming finishes are engineered for easy cleaning, so fingerprints and smudges become a thing of the past. From the platinum chromed logo to the tinted glass and sophisticated edge-to-edge metal band, every detail has been designed to delight and enhance the overall Whirlpool experience.



### Total annual energy consumption

Ideal performance, outstanding savings. Whirlpool Hoods are designed to provide exceptional results, while reducing energy costs.



### Touch control user interface

Intuitive controls. The stylish touch-control user interface provides simple, immediate access to all of your hood's settings and functions.



### Booster

Odour-free cooking. This Whirlpool Hood features an extraction booster, that ensures ideal air filtration and odour and grease aspiration.

# WDO 93F B K

12NC: 859991532660

GTIN (EAN) code: 8003437209512

**Whirlpool**

SENSING THE DIFFERENCE

## MAIN FEATURES

Product group	Hood
Colour body	Black
Material body	Stainless steel
Colour chimney	N/A
Material chimney	N/A
Typology	Downdraft
Installation type	Table top
Type of control	Electronic
Type of control settings	Touch-control
Decor panel options	Not possible
Motor location	Integrated motor in hood body
Operating Mode	Convertible
Electrical connection rating (W)	110
Current (A)	0,5
Voltage (V)	220-240
Frequency (Hz)	50
Length of Electrical Supply Cord (cm)	200
Plug type	Schuko
Chimney height (mm)	0
Height of product, without chimney (mm)	0
Height of the product	770
Width of the product	860
Depth of the product	400
Minimum niche height	0
Minimum niche width	0
Niche depth	0
Net weight (kg)	22

## TECHNICAL FEATURES

Type of manual control devices	Touch control
Type of automatic control devices	-
Number of motors	1
Total power of the motors (W)	110
Number of speed settings: boost option availability	3
Boost presence	Yes
Maximum output air extraction (m <sup>3</sup> /h)	603
Boost position air extraction (m <sup>3</sup> /h)	603
Maximum output recirculating air (m <sup>3</sup> /h)	0
Boost position output recirculating (m <sup>3</sup> /h)	0
Light Control Type	-
Number of lights	0
Type of lamps used	N/A
Total power of the lamps (W)	0
Diameter of air outlet (mm)	0
No-return airflow flap	No
Grease filter material	Washable aluminium
Odour filter	No

## PERFORMANCES

Sound power at min. speed (2010/30/EU)	54
Sound power at max. speed (2010/30/EU)	68
Noise level with boost position (dB(A) re 1 pW)	0

